



62A Shannon Street Lalor Park NSW

2  1 

View : <https://www.agiuspropertygroup.com.au/lease/nsw/western-sydney/lalor-park/residential/house/7030230>

If you're seeking a great location for renting, this is prime! For the young and growing family, young couples or busy professional singles, it has everything you need: a large block, an uncomplicated but accommodating layout, an extra-convenient position, a quiet, welcoming street and access to all the very best amenities, schools and transport this great area, near the Kings Langley border, has to offer. The interiors are thoroughly modern, and with an excellent covered entertaining area, you get versatile hosting options, whether family barbecues or evening soirées with colleagues. And you get privacy, security and friendly surrounds!

Features:

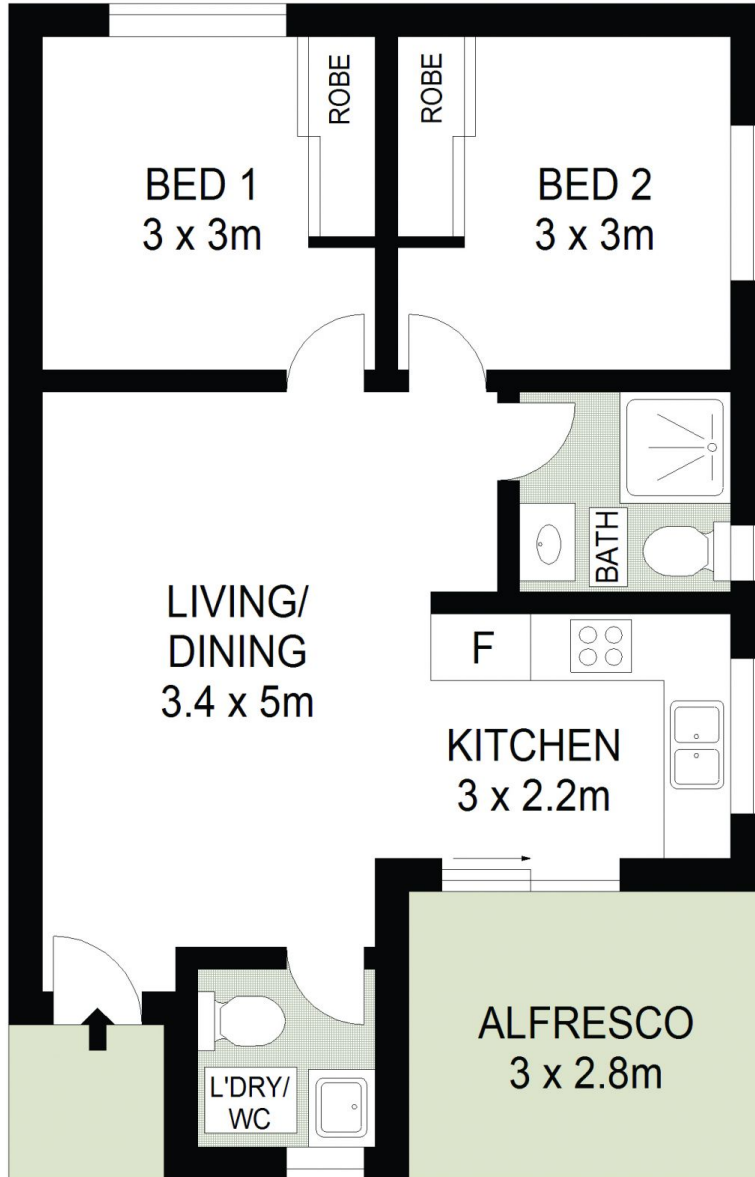
- ? Two generous bedrooms with built-in wardrobes
- ? Elegant and light-filled gas kitchen with direct access to alfresco dining area



Piers Silingardi
0433 543 154



Adam Ruddy
0447 742 719



62a Shannon Street
Lalor Park



DISCLAIMER: All dimensions are approximate and for illustrative purposes. Interested parties should rely on their own enquiries. Floor Plans by ShutterBooth Sydney.