



36 Antique Crescent Woodcroft NSW

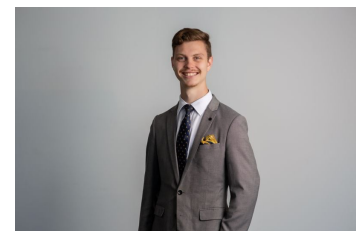
4  2  2 

Choosing to live in a location like this is one of the glories of renting! You get to live in a part of Sydney that is sought-after, with close access to public transport and shopping - a location coveted by anyone seeking a Hills address! Rent this superb home and your lifestyle won't miss a beat. The home-based worker or home business has a dedicated study/office. Hosting duties will be anything but a chore in your delightful, huge alfresco dining area that overlooks the lake. With four big bedrooms and large, easy-flowing living areas, and abundant workshop space in your enormous double garage, combined with a good-sized backyard, you will have the space for family and fun no matter what way of life you choose. As an added delight for you and your family, the property overlooks the Woodcroft Lake and Park!

View : <https://www.agiuspropertygroup.com.au/lease/nsw/western-sydney/woodcroft/residential/house/7234220>

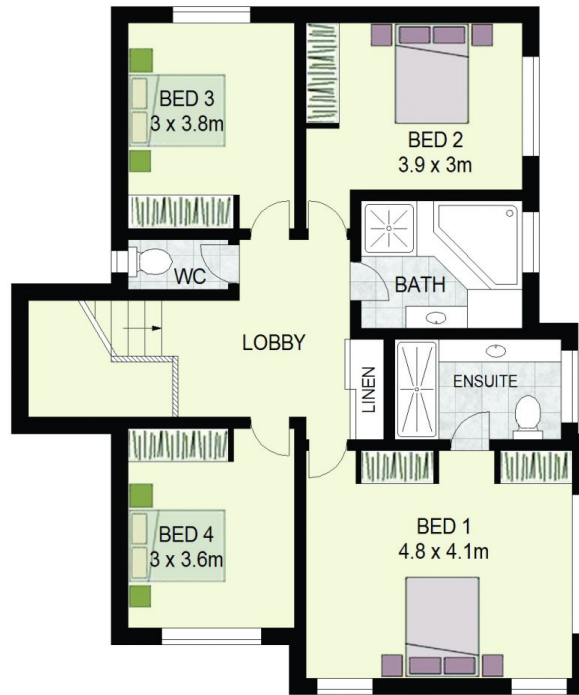


Piers Silingardi
0433 543 154



Adam Ruddy
0447 742 719

Features:



FIRST FLOOR



GROUND FLOOR

36 Antique Crescent
Woodcroft



DISCLAIMER: All dimensions are approximate and for illustrative purposes. Interested parties should rely on their own enquiries. Floor Plans by ShutterBooth Sydney.