





20 Christine Crescent Lalor Park NSW

3  1  1 

This humble abode offers everything your family needs: a straightforward, lovingly-maintained home on a sizeable block of land in a peaceful location on the street's high side, and easy accessibility to Lalor Park's retail shopping precinct as well as Seven Hills Station. This home accommodates the family that wants its meeting, eating and playing to be uncomplicated. For the handyman, it boasts a workshop, and for those with an eye to the future, there's potential for a granny flat out back

It offers you:

- 3 bedrooms to accommodate plenty of family
- High 9ft ceilings - a canvas for your imagination
- A cute, updated bathroom off the main hallway
- An updated electric kitchen for the family chef
- A combined lounge and dining room with light & bright floating floors

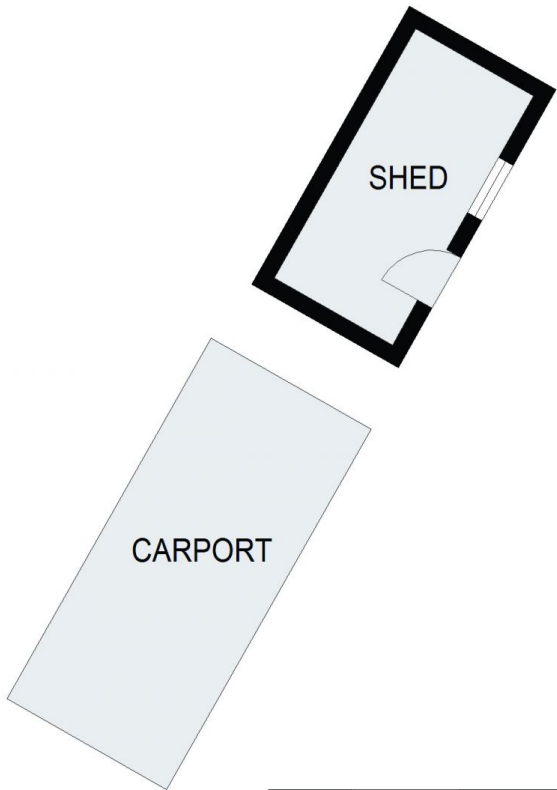
Price : \$ 762,000
Land Size : 556.4 sqm
View : <https://www.agiuspropertygroup.com.au/sale/nsw/western-sydney/lalor-park/residential/house/7261299>



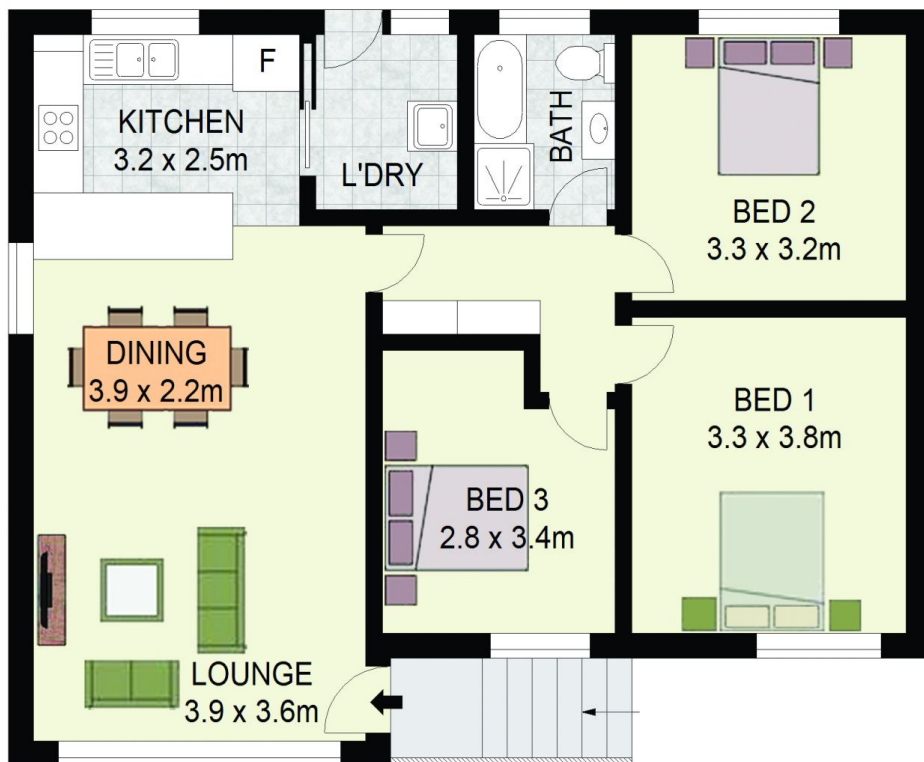
Alistair Agius
02 8320 0598



Jonah Tuilata
0415 467 477



(NOT IN POSITION)



20 Christine Crescent
Lalor Park



DISCLAIMER: All dimensions are approximate and for illustrative purposes. Interested parties should rely on their own enquiries. Floor Plans by ShutterBooth Sydney.