



75/11 Glenvale Avenue Parklea NSW

2  2  1 

Sleek, modern and offering all the convenience of any suburban home without the maintenance, this two-bedroom resort-style townhouse is roomy, accommodating and brilliantly located. Occupying a well-secured complex, this low-care, high-lifestyle unit is the ideal first home or investment, giving you nothing to do but move in and enjoy the way of life it offers. The Sunora Estate provides you exclusive access to its swimming pool, gym, tennis court and communal barbecue area. The interiors of your unit are stylish, well-appointed and radiant with natural light, and the layout and the situation will suit anyone from the homebody to the lock-up-and-leave professional, with the very best of shopping, transport and amenities right nearby.

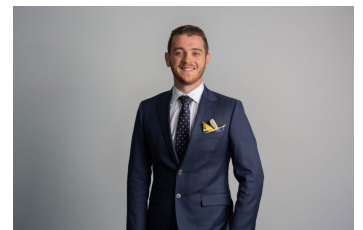
Price : \$ 585,000
Land Size : 184 sqm
View : <https://www.agiuspropertygroup.com.au/sale/nsw/western-sydney/parklea/residential/townhouse/7305201>

Features:

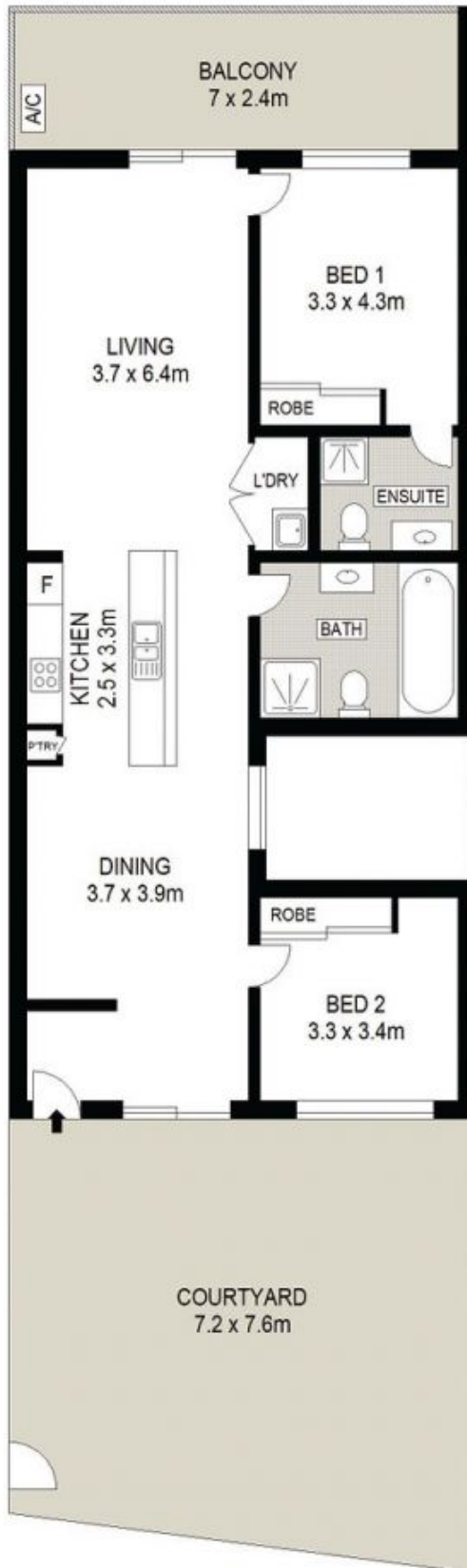
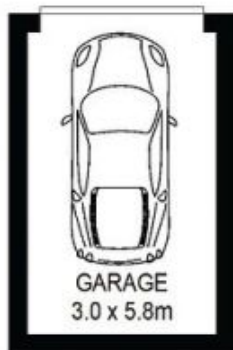
? Two large bedrooms with built-in wardrobes, ensuite to main bedroom



Alistair Agius
02 8320 0598



James Brodie
0487 760 330



75/11 Glenvale Avenue
Parklea

DISCLAIMER: All dimensions are approximate and for illustrative purposes. Interested parties should rely on their own enquiries. Floor Plans by ShutterBooth Sydney.