



20 Christine Crescent Lalor Park NSW

3  1  1 

This lovely abode offers everything your family needs: a straightforward, lovingly-maintained home on a sizeable block of land in a peaceful location on the street's high side, and easy accessibility to Lalor Park's retail shopping precinct as well as Seven Hills Station. This home accommodates the family that wants its meeting, eating and playing to be uncomplicated.

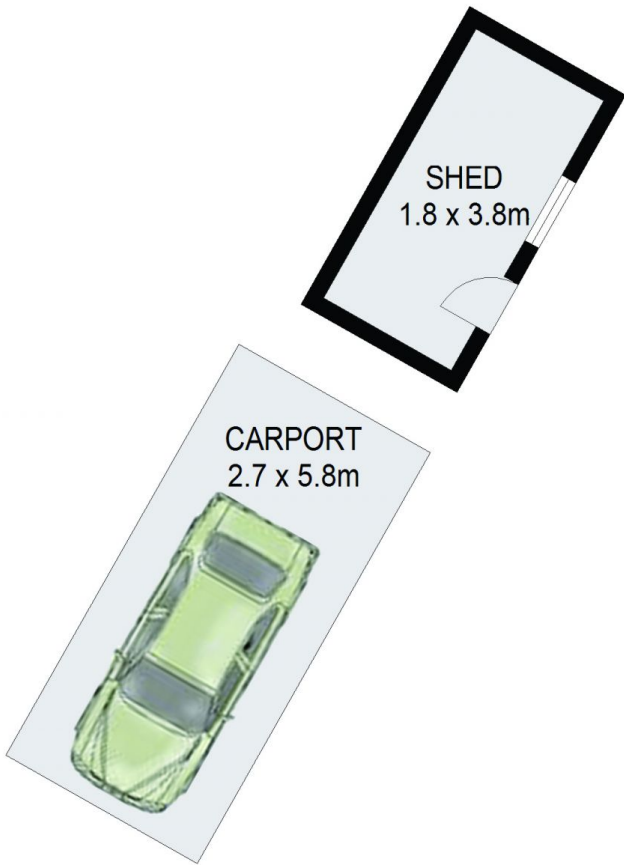
It offers you:

- 3 bedrooms to accommodate plenty of family
- High 9ft ceilings - a canvas for your imagination
- A cute, updated bathroom off the main hallway
- An updated electric kitchen for the family chef
- A combined lounge and dining room with light & bright floating floors
- A nice-sized, 556sqm block of land
- A single carport and workshop

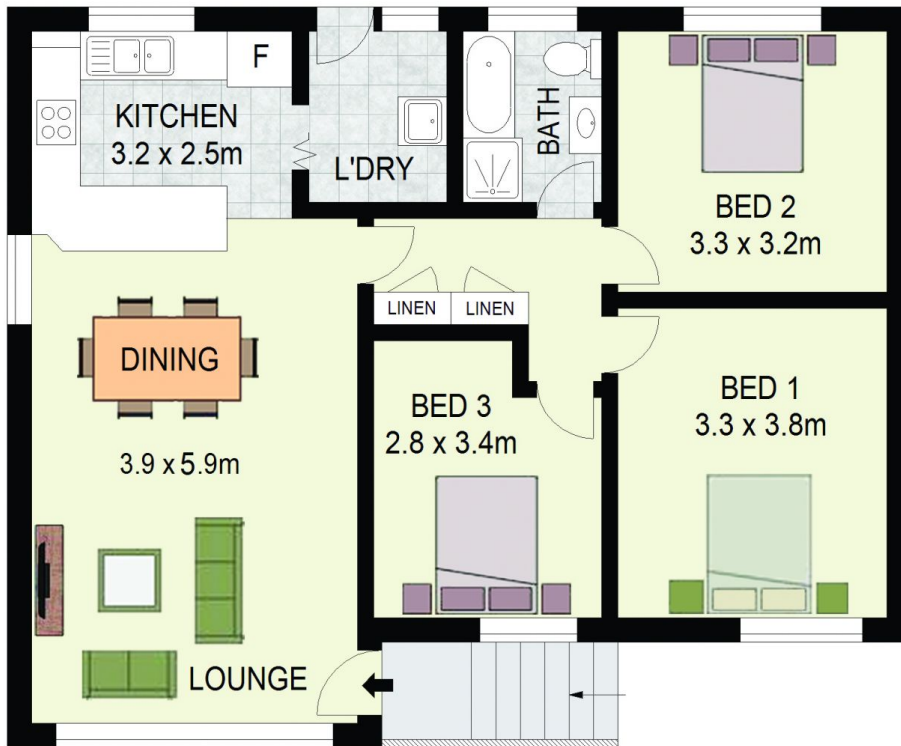
View : <https://www.agiuspropertygroup.com.au/lease/nsw/western-sydney/lalor-park/residential/house/7325434>



Tayla Irvine
0428 499 963



(NOT IN POSITION)



20 Christine Crescent,
Lalor Park

ALISTAIR AGIUS
0447 928 888



DISCLAIMER: All dimensions are approximate and for illustrative purposes. Interested parties should rely on their own enquiries. Floor Plans by ShutterBooth Sydney.