



### 1 Ibis Road Lalor Park NSW

3  1  2 

First-homers, investors or developers, this property is a great opportunity no matter what your vision for it. Set on a large 682sqms block of premium Lalor Park real estate, it gives you choices. The position is excellent, the neighbourhood is serene, and it's R2 zoned and brimming with possibilities. The home itself, should you choose to use it as a base as you go about adding, extending or refurbishing, is reliable and serviceable. If you decide to rebuild, you have a generous serving of land as your canvas.

For the potential developer or builder, the value of the parcel of land and its excellent location close to transport, schools and all essentials will ensure future profitability.

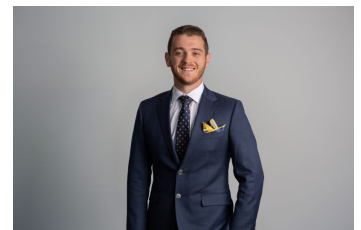
#### Features:

- ? 689m2 of premium Lalor Park real estate
- ? Level block

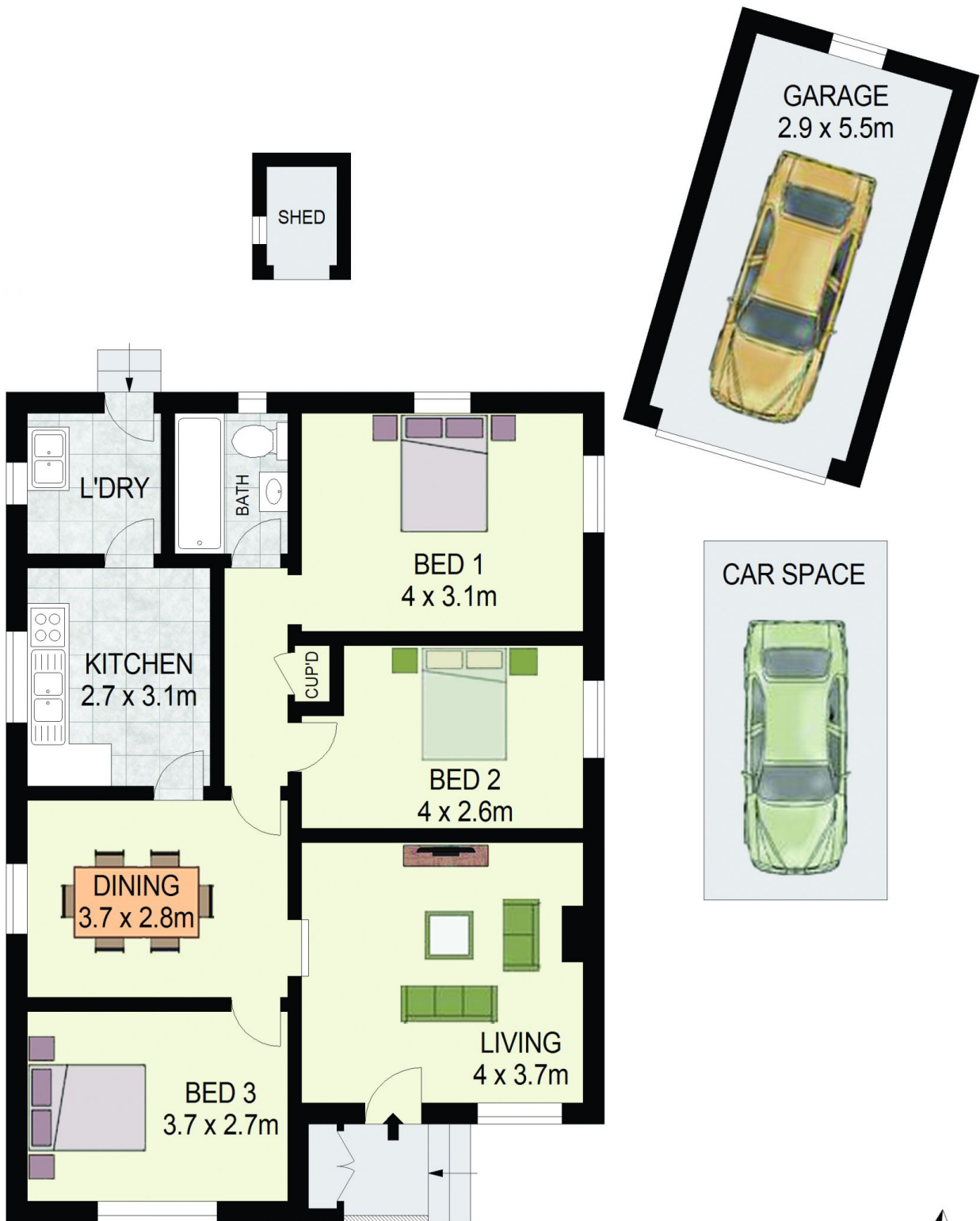
**Price** : \$ 685,000  
**Land Size** : 689.2 sqm  
**View** : <https://www.agiuspropertygroup.com.au/sale/nsw/western-sydney/lalor-park/residential/house/7345339>



**Alistair Agius**  
02 8320 0598



**James Brodie**  
0487 760 330



1 Ibis Road  
Lalor Park



DISCLAIMER: All dimensions are approximate and for illustrative purposes. Interested parties should rely on their own enquiries. Floor Plans by ShutterBooth Sydney.