



11 Cartwright Crescent Lalor Park NSW

3  1  2 

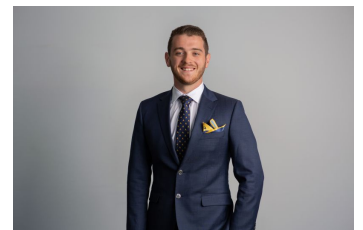
Situated on a huge, lavish, attractively established serving of prime Lalor Park real estate, this three-bedroom family abode hides some real treasures. The sheer size of the block means this great residence offers the traditional delights of an established home, plus potential galore! If you choose to see this great parcel of land as an investment, it's DA approved for subdivision and 1018m² of premium land.

If you opt to live in and develop later on, the living spaces in the existing home are cosy and made for family memories, and the huge block is a haven for the kids and pets, and a playground for the whole family during those big, noisy get-togethers. Open it up, and on the weekends you have large, easy-flowing living areas and large, friendly entertaining spaces at the front and back of the home. Add a truly sought-after Lalor Park address and you have an

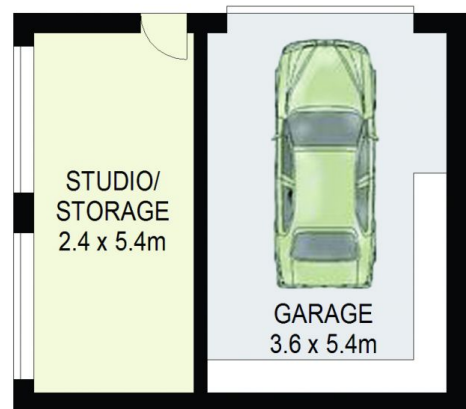
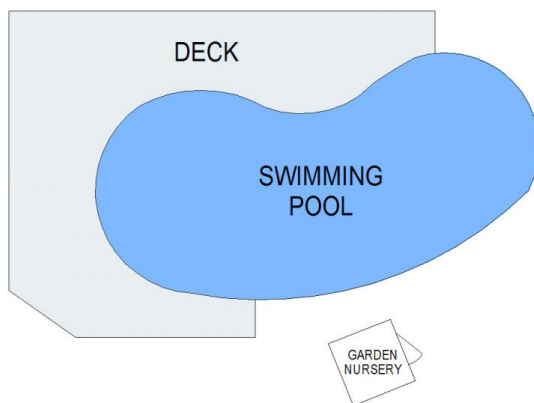
Price : \$ 1,040,000
Land Size : 1018 sqm
View : <https://www.agiuspropertygroup.com.au/sale/nsw/western-sydney/lalor-park/residential/house/7365533>



Alistair Agius
02 8320 0598



James Brodie
0487 760 330



11 Cartwright Crescent
Lalor Park



DISCLAIMER: All dimensions are approximate and for illustrative purposes. Interested parties should rely on their own enquiries. Floor Plans by ShutterBooth Sydney.