






**43 Hutchins Crescent Kings Langley NSW**

4  3  4 

Sitting grandly on a sumptuous, attractively established serving of real estate, in a select location in a sought-after pocket of Kings Langley, close to anything your heart desires, this superb brick double-storey home is a family bonanza. It gives you large private areas, plentiful amenities, sweeping living spaces and cosy entertaining options galore. Whether you're a hermit or a gregarious host, you have a selection of large areas and private spaces to hang out in. The combined sunroom, alfresco dining area, separate pergola and pleasant lawns and shady trees make for a delightful hosting and everyday living experience.

The yards are impeccable, verdant and tastefully landscaped, and there are expanses of level grassed area for the kids, pets and family games. This truly is a must-inspect!

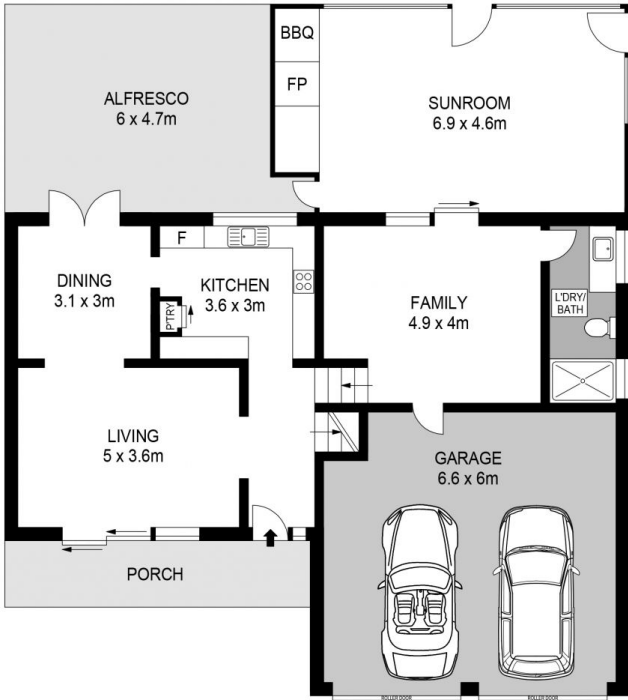
**Price** : \$ 1,420,000  
**Land Size** : 696.8 sqm  
**View** : <https://www.agiuspropertygroup.com.au/sale/nsw/western-sydney/kings-langley/residential/house/7529742>



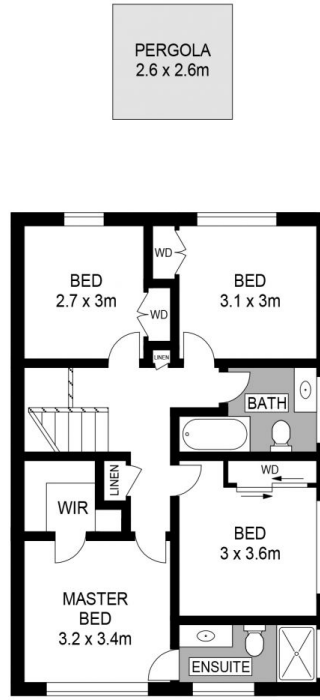
**Alistair Agius**  
02 8320 0598



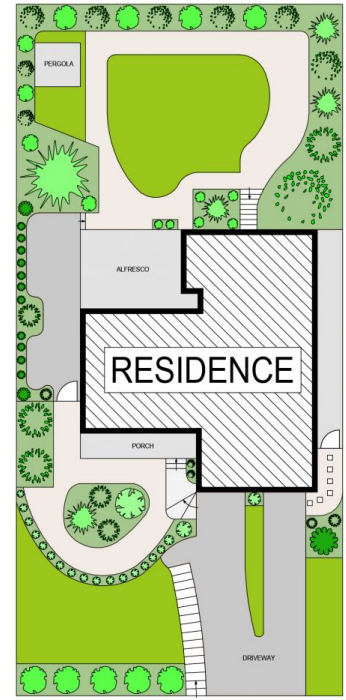
**Brendan McCreanor**  
0468 677 471



DOWNSTAIRS



UPSTAIRS



SITE PLAN (NOT TO SCALE)



43 Hutchins Crescent, Kings Langley