

12 Earle Street Doonside NSW

3 🛏 2 🚿 4 🚗

Situated in one of Sydney's most vibrant growth areas, this fetching, neat cottage-style home is uncomplicated in layout and family-friendly. The home is well-appointed, has great private and living areas, and the potential to add/extend at your leisure. Externally, your property is impeccable - manicured, level and attractively established.

Price : \$ 1,180,000
Land Size : 1214 sqm
View : <https://www.agiuspropertygroup.com.au/sale/nsw/western-sydney/doonside/residential/house/7621453>

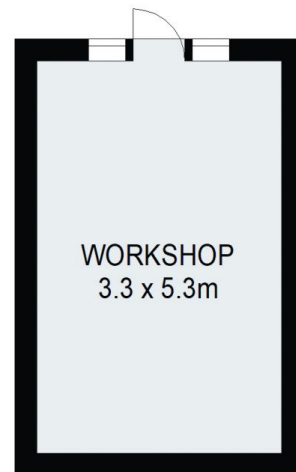
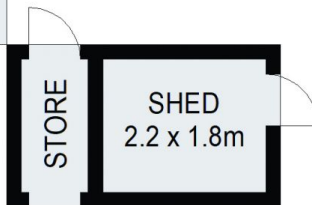
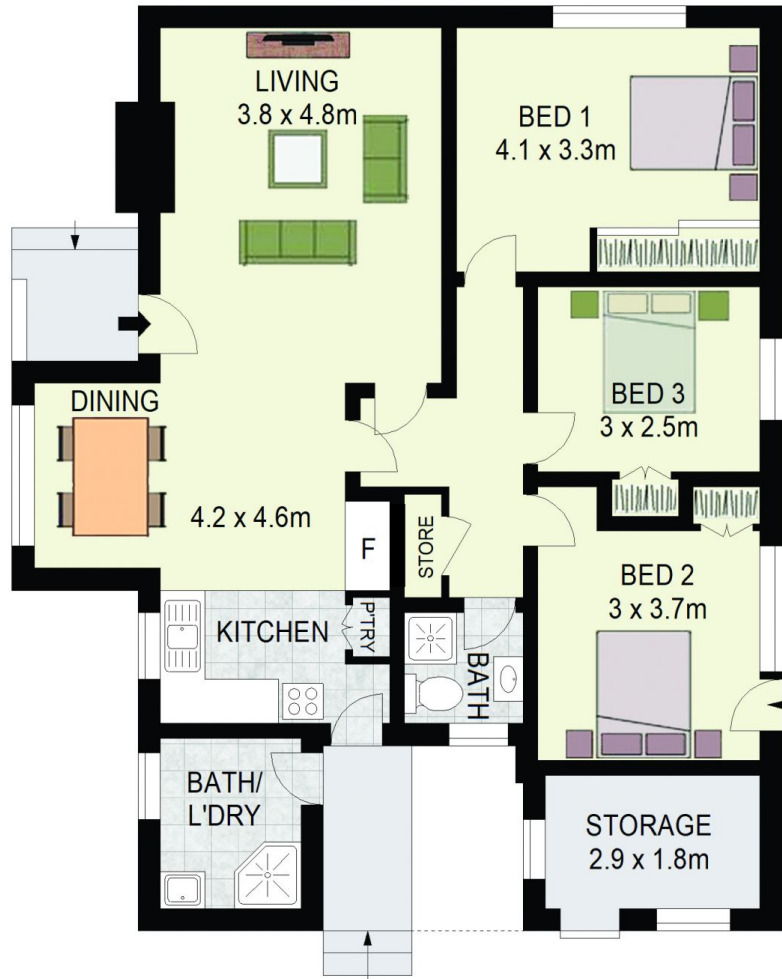
Best of all, it sits on 1,214 square metres of prime Doonside real estate, opening up a world of possibilities not just for those wanting to break into this thriving area, but also for investors. With battle-axe development potential (STCA), this investment promises great future yield. If you just want to settle in and enjoy, this is simply a great family home with room to add features such as a covered entertaining area, and it even has a separate workshop for the handyman to fulfil his vision for his lovely new home.



Luke Smith
02 8320 0598



Alistair Agius
02 8320 0598



12 Earle Street,
Doonside

LUKE SMITH
0410 338 210



DISCLAIMER: All dimensions are approximate and for illustrative purposes. Interested parties should rely on their own enquiries. Floor Plans by ShutterBooth Sydney.

