



23 Jopling Crescent Lalor Park NSW

3  1  2 

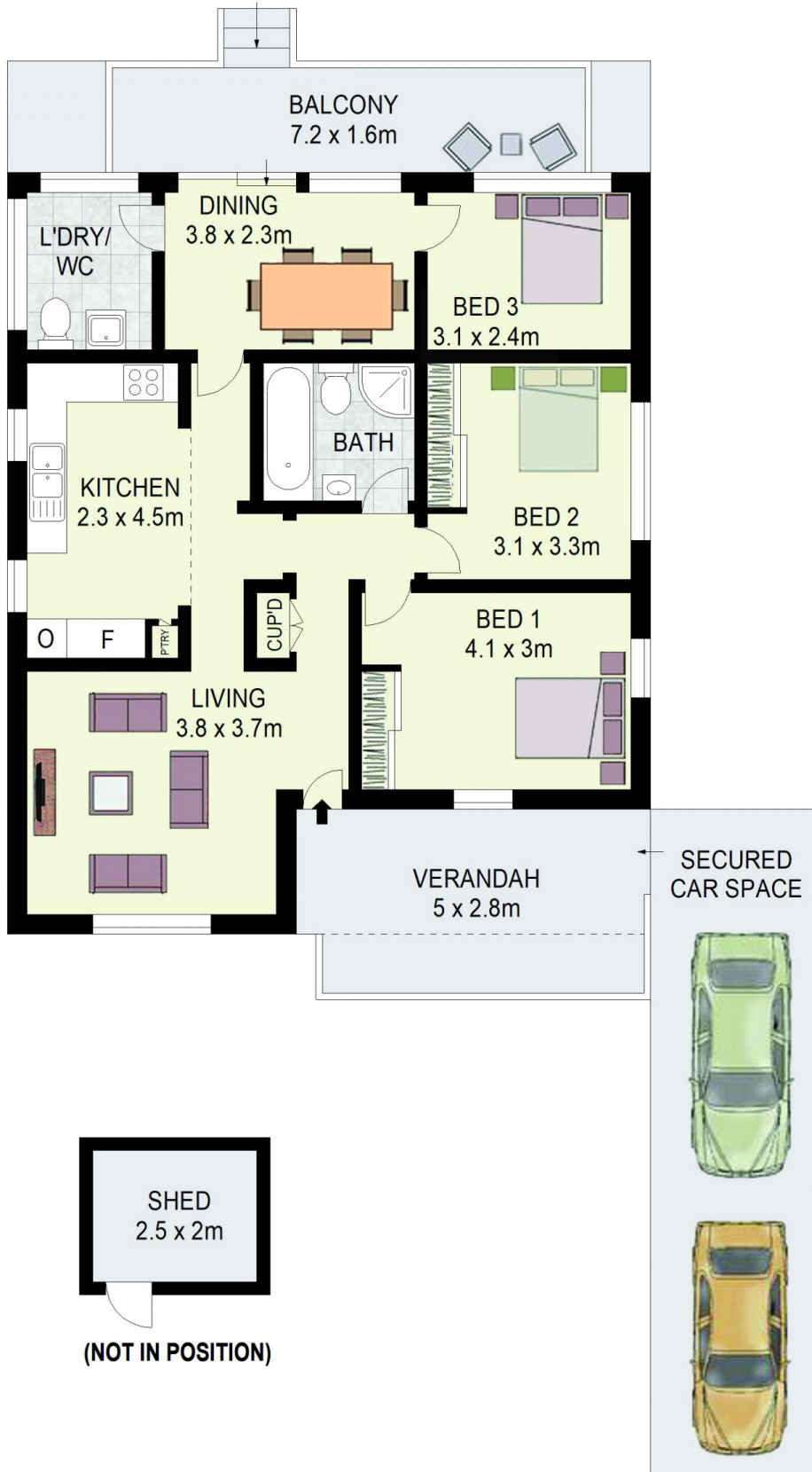
A sizeable block, a serene, family-friendly tree-lined cul-de-sac, a great location and a lovely, accommodating and well-appointed home - if you're in the rental market, this reliable, roomy family home provides for all your family's needs. With amenities enough to easily handle the busy weekdays, and roomy living spaces, you will settle in immediately without missing a beat.

The rear veranda and the large front porch are lovely spaces to enjoy a cuppa, a wine or a read, and come the weekend, the rear deck combines nicely with the living areas for a delightful hosting experience. Meanwhile, the level backyard offers a nice expanse of grass for the kids and pets to enjoy. All this comfort and seclusion, plus easy accessibility to the bustling world makes this home the perfect blend of both worlds!

View : <https://www.agiuspropertygroup.com.au/lease/nsw/western-sydney/lalor-park/residential/house/7665532>



Stephen Ross
02 8320 0598



23 Jopling Crescent,
Lalor Park

ALISTAIR AGIUS
0447 928 888



DISCLAIMER: All dimensions are approximate and for illustrative purposes. Interested parties should rely on their own enquiries. Floor Plans by ShutterBooth Sydney.