



88 Milford Drive Rouse Hill NSW

5 🛏 3 🚿 4 🚗

So what is it you're after? A fantastic family-oriented community? Easy access to - everything? A sophisticated and striking family home? Room enough for immediate and extended family? Generous and easy-flowing living spaces? A nice blend of indoor and outdoor living? This bright, immaculate dwelling has it all! Sitting elegantly on the high side of a sought-after street, enjoying bushland vistas, this premium home has been designed for those who appreciate an abode that is pleasing to the eye and functional for family and friends - and positioned for comfort and convenience!

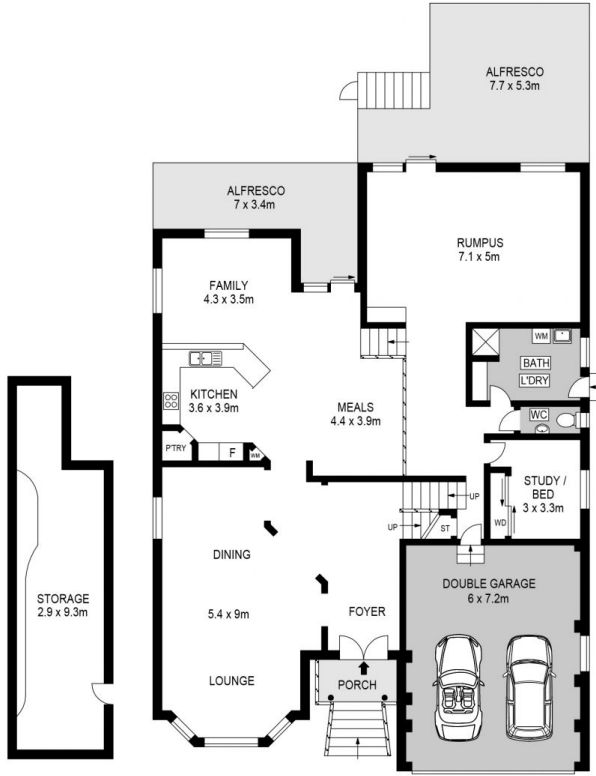
Features:

- Stately, light-filled entry foyer
- Separate lounge, dining and living areas
- Study/home office, complete with wardrobe, which can be converted into fifth bedroom

Price : \$ 1,932,500
Land Size : 600.7 sqm
View : <https://www.agiuspropertygroup.com.au/sale/nsw/hills/rouse-hill/residential/house/7835937>



Dominic Ayoub
0401 242 707

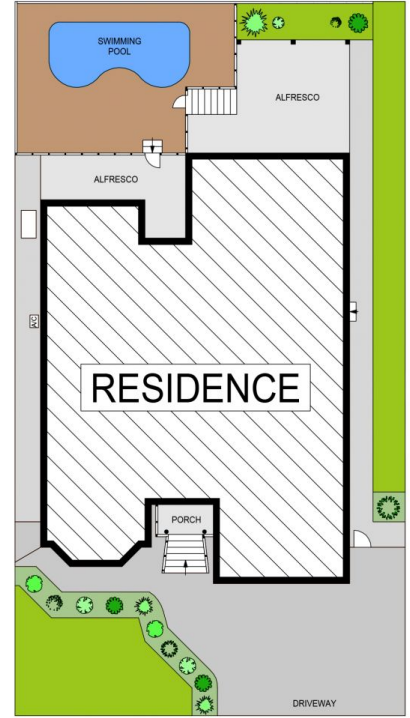


LOWER GROUND FLOOR

GROUND FLOOR



FIRST FLOOR



SITE PLAN (NOT TO SCALE)



88 Milford Drive, Rouse Hill