



### 36 Nimbus Close Kellyville NSW

5  2  2 

Situated in a highly desirable pocket of Kellyville and within walking distance to Bernie Mullane Sporting Complex, this immaculately presented single-level family home is set on 560sqm of land. Nestled in a tranquil street, this home is perfect for young and growing families, offering a fantastic layout and quality finishes that will impress from the moment you step inside.

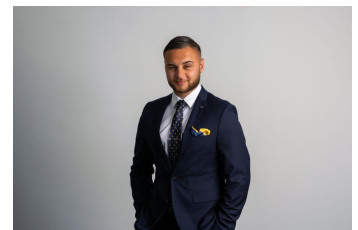
The light-filled interior features a formal lounge, a separate dining area, and a spacious family room that flows seamlessly from the stylish kitchen. The kitchen is a highlight with its porcelain tiled floor, modern stainless steel appliances, gas cook-top, ample storage, and central location within the home.

The accommodation includes five well-sized, beautifully styled bedrooms. The generously-sized master suite boasts a walk-in robe and a spacious ensuite with a spa.

**Price** : Contact Agent  
**Land Size** : 560 sqm  
**View** : <https://www.agiuspropertygroup.com.au/sale/nsw/hills/kellyville/residential/house/8030619>



**Dominic Ayoub**  
0401 242 707



**Nicholas Harb**  
02 8320 0598



36 Nimbus Close,  
Kellyville

DOMINIC AYOUB  
0401 242 707



DISCLAIMER: All dimensions are approximate and for illustrative purposes. Interested parties should rely on their own enquiries. Floor Plans by ShutterBooth Sydney.