



### A101/147 Great Western Highway Mays Hill NSW

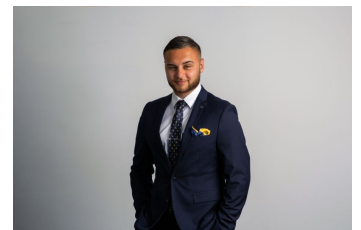
3  2  2 

This dazzlingly designed apartment, sitting comfortably between Westmead and Parramatta, is all about enhanced lifestyle! Internally, the spaces are open, fantastically functional, totally modern, adorned with high-end finishes and easy on the eye. Its spaces are radiant with natural light and easy-flowing. The balcony with views is a pleasant breakout space, and opens out from the living area to provide a delightful hosting experience for those family barbecues or soirées with colleagues or clients. Young families, downsizers or busy professionals seeking high accessibility and a lock-up-and-leave lifestyle will have everything they need at their disposal. Externally, the grounds are beautifully landscaped with garden seating. Just moments away lies a world of breathtaking choices - eateries, retail, transport, education and medical.

**Price** : Price Guide \$750,000  
**Land Size** : 146 sqm  
**View** : <https://www.agiuspropertygroup.com.au/sale/nsw/parramatta/mays-hill/residential/apartment/8036597>

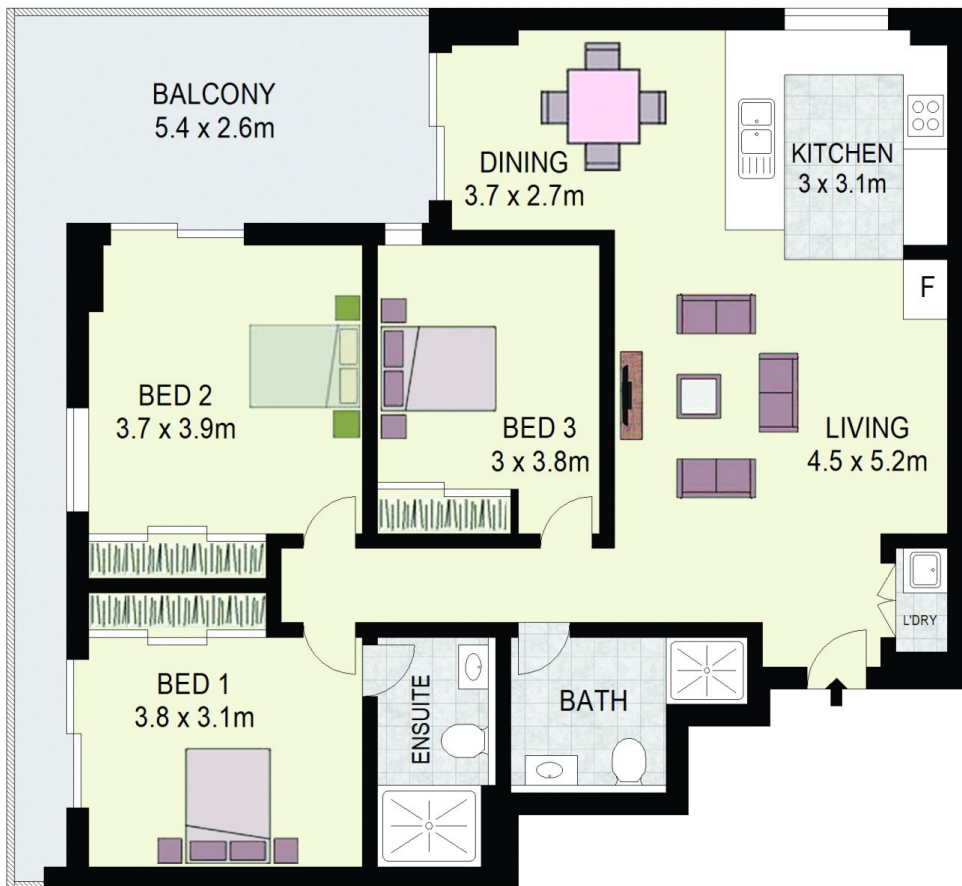
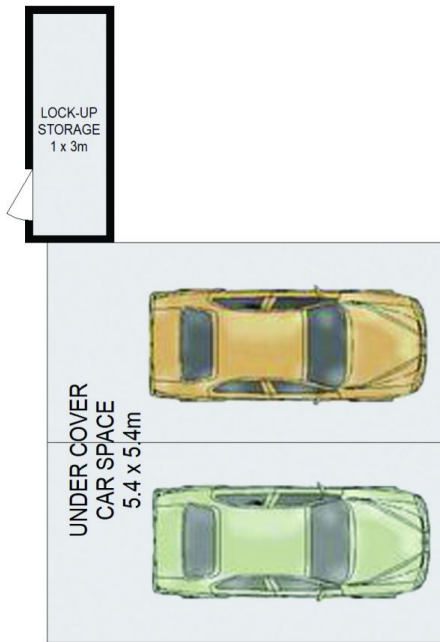


**Juliano De Rossi**  
02 8320 0598



**Nicholas Harb**  
02 8320 0598

Features:



A101/147 Great Western Highway,  
Mays Hill

JULIANO DE ROSSI  
0406 411 666



DISCLAIMER: All dimensions are approximate and for illustrative purposes. Interested parties should rely on their own enquiries. Floor Plans by ShutterBooth Sydney.