



607/11-15 Fishburn Crescent Castle Hill NSW

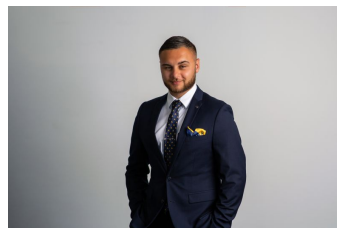
3  2  2 

Experience sophistication and style in this stunning three-bedroom apartment, designed with a sleek, modern aesthetic that seamlessly blends indoor and outdoor living spaces. The light-filled living and dining area flows effortlessly onto a private balcony, offering breathtaking views of the surrounding area.

Impeccably designed with premium finishes, this apartment features a gourmet kitchen with European appliances, stone benchtops, and ample storage space. All three generously sized bedrooms come with built-in wardrobes, while the master bedroom includes a luxurious ensuite.

Enjoy the convenience of working from home with a dedicated study area, providing a private and peaceful space to focus. Additional features include secure car parking, storage space, and access to luxurious amenities

Price : Contact Agent
Building Size : 108 sqm
View : <https://www.agiuspropertygroup.com.au/sale/nsw/hills/castle-hill/residential/apartment/8068888>



Nicholas Harb
02 8320 0598



APARTMENT 607. These floor plans are a guide only and do not constitute an offer or contract. Please note that changes may be made to the development during construction and without call or notice. Please refer to any signage on-site. All parties should rely on their own investigations to confirm the information and it is not guaranteed by CBD, will be accepted for any discrepancy or misstatement.

ASTRID

CASTLE HILL

APARTMENT
607
SIXTH LEVEL

3 2 2

TOTAL	108 m ²
INTERNAL	86 m ²
EXTERNAL	22 m ²
STORAGE	1 m ²

ASTRIDCASTLEHILL.COM.AU