



29 Heathfield Street Kellyville Ridge NSW

4  2  2 

Discover luxury and convenience in the heart of Kellyville Ridge with this brilliantly appointed home. Nestled in a peaceful and desirable location, it exudes class and sophistication, surrounded by similarly stylish homes. Flooded with natural light and boasting high-tech features, this residence is designed for seamless everyday living and impressive hosting.

Internally, the layout maximizes space and functionality, with high ceilings and abundant windows enhancing the sense of openness. The bedrooms are strategically clustered for privacy, while the living areas flow effortlessly from a modern, open-plan design to an inviting alfresco dining space, perfect for indoor-outdoor entertaining.

Thoughtful details unify the home, from the thematic unity of cabinetry and benches in the bathroom, laundry, and

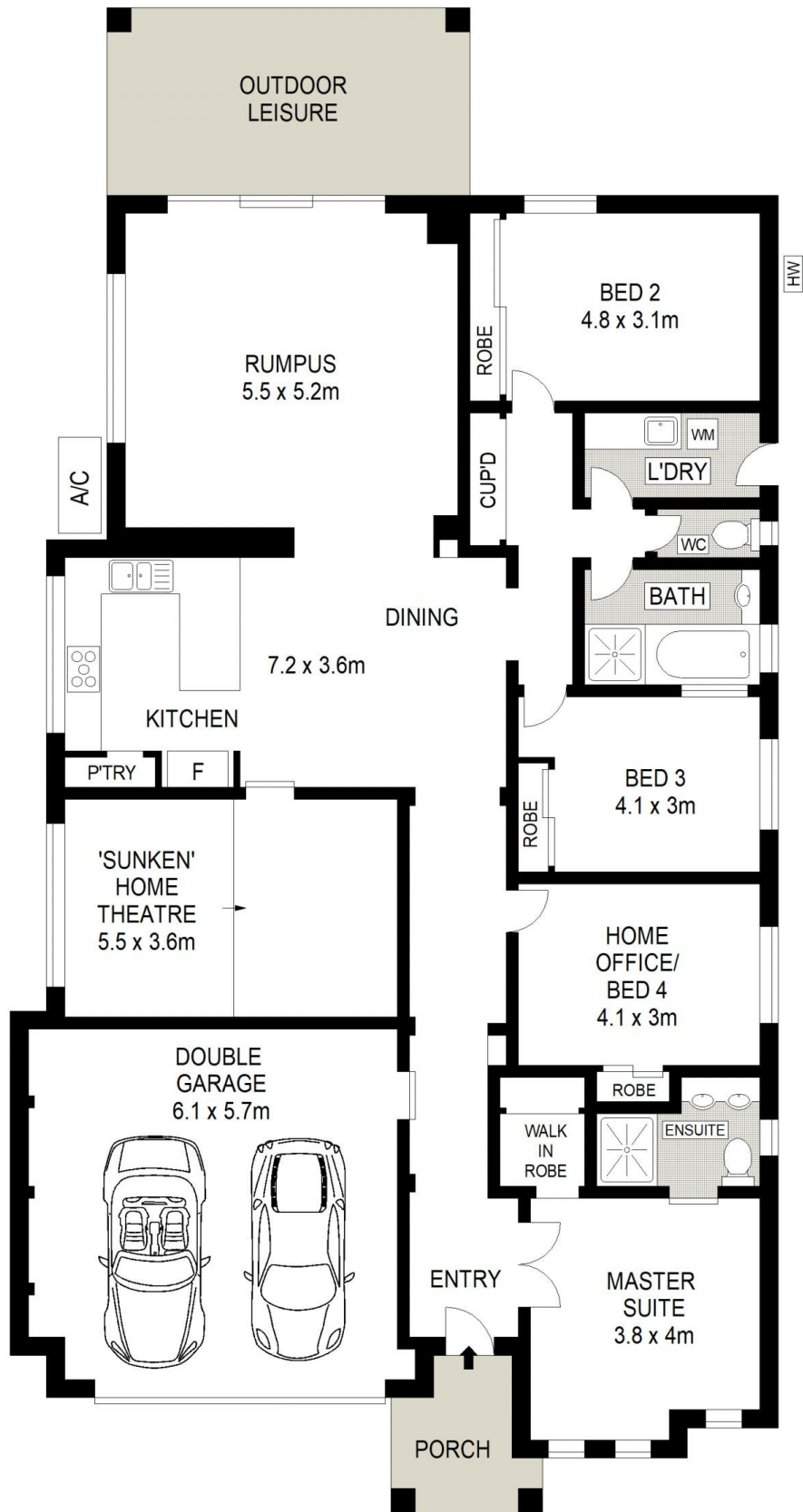
Price : Contact Agent
Land Size : 463.4 sqm
View : <https://www.agiuspropertygroup.com.au/sale/nsw/hills/kellyville-ridge/residential/house/8072706>



Nicholas Harb
02 8320 0598



Dominic Ayoub
0401 242 707



29 Heathfield Street,
Kellyville Ridge

DISCLAIMER: All dimensions are approximate and for illustrative purposes. Interested parties should rely on their own enquiries.

