



26 Patterson Road Lalor Park NSW

3  1  2 

Modernised and given tasteful touches by discerning owners, located in a serene street, close to all the best amenities around, this fetching cottage-style home is warm and embracing, with everything you need for the busy family, and potential for even more. The interiors are a nice balance of the old and the new, as beautiful leadlight windows, stepped cornices and tray ceilings combine with good old-fashioned high walls to give you a sense of space and plenty of natural light, and modern touches such as downlights throughout and tasteful tiling and plumbing in the bathroom and kitchen please the eye. The vast sunroom is great for entertaining, and once you're settled, you have plenty of latitude to enhance the fantastic entertaining possibilities of your new home, or extend. What's more, the yard has space for a granny flat (STCA).

Type : House
Price : \$ 1,101,000
Land Size : 537.5 sqm
View : <https://www.agiuspropertygroup.com.au/sale/nsw/western-sydney/lalor-park/residential/house/8101759>

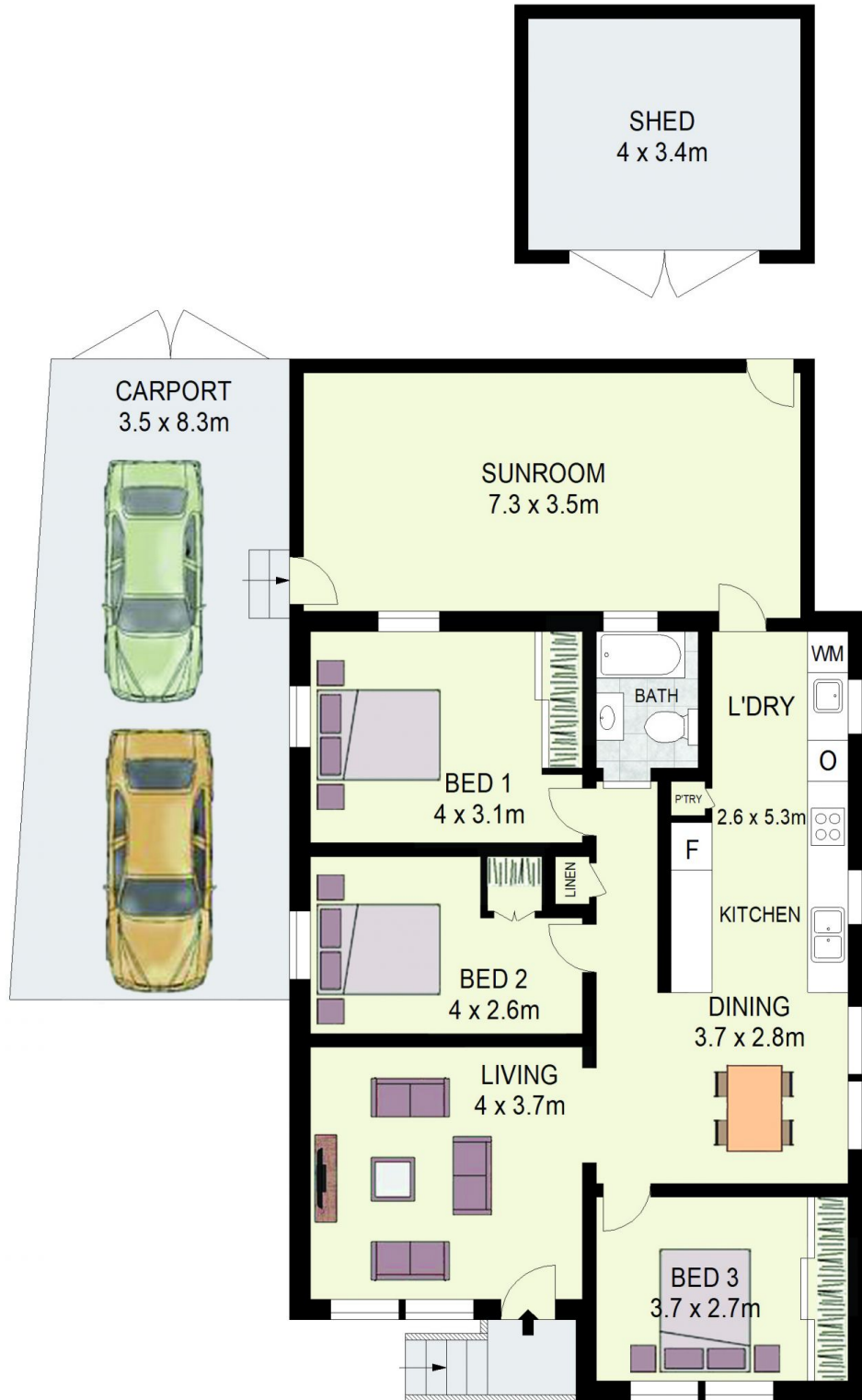


Alistair Agius
02 8320 0598



Kasra Saeednia
0459 999 325

[For full version visit the website](https://www.agiuspropertygroup.com.au)



26 Patterson Road,
Lalor Park



DISCLAIMER: All dimensions are approximate and for illustrative purposes. Interested parties should rely on their own enquiries. Floor Plans by ShutterBooth Sydney.